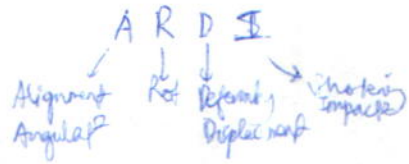


FRACTURE



Hx: Significant ~~fall/trauma~~

O/E:

Alignment

Deformity / Angular² / Rotat² / Displacement / Shortening

Open / Close

Stable / Unstable

Red / Hot / Tender / Swollen

←
oedema
Blood
Pw

Pulses

NR (1° haemorrhage / oedema / fragments)

View:

AP

lat
(linea - horizon W)

oblique (sup / inf)

Complete / incomplete series

Ix: XR
Jt above & Jt below

Name + Date
Age, Sex

Symmetry + Site

① Alignment / Rotat² / Angular² / Impact² / Displacement / Shortening / Stress XR

② Jt space deformity
degree in lat/AP

③ Ux - ? step / ? break, bulging / buckling
W Interruption in bony trabeculae

Fracture line - transverse / spiral / ? compound / ? comminuted
rotat² injury

④ soft tissue displacement / skull ; Jt effus² ; Fat pad displacement

⑤ Adj² - ? Dislocat² X like and into Jt
? pdp: OP mets CA

May I see - another view?
- on Xray 'ē jt above & below ē X ?

Post-surg:

Union - trabeculae across X line

Management

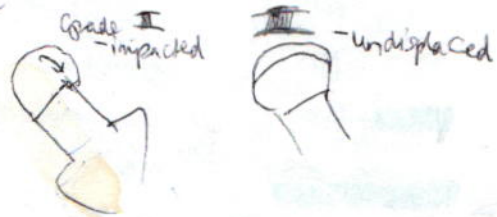
- ① Revascular²
- ② Reduct²
- ③ Restrict² (Immobilizat²)
- ④ Rehab

Colles' X - dorsal angulat²
 " displacement
 radial deviat²
 impact² - proX
 rotat² - supination

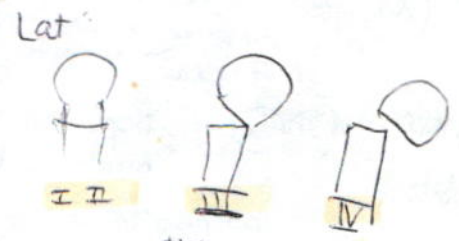
oss - ~~X~~ ulnar styloid

Growth plate X (Salter-Harris) - I follow growth plate
 II epiphysis + flake meta → Thurston-Holland sign (comment)
 III
 IV
 V - compress² phys²

XNOF - Asym
 Ext rot shaft - iliopectas (int rotator)
 Site: i/trochanter / per-trochanter
 subscapial
 Displacement → Direct
 Shortened → Degree



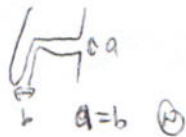
? Communion
 Adj jt → ? Dislocat²
 X line extend to jt



Fibular X - ? level
 jt → fibrofib lig A
 below jt B
 above C

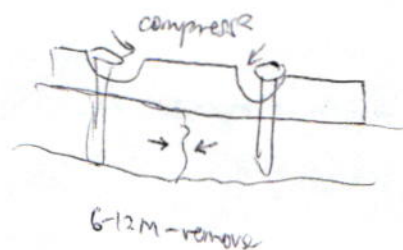


Talus - ? displaced - km → lose 40% W bear



±bv
 bv loss → replace head
 >60 → remanoplasty
 <60 → Pin - vs lid - screw plate

Intraart X - need fixat²
 prevent stiffness (Fracture Disloc - fibros)



Galeazzi - X radius
 dislocat² dis radio-ulna

Monteggia - X ulna
 dislocat² prox radio-ulna jt

Penultimate trans-scapoid X dislocat²

X NOF

Intracapsular — Subcapital
Transcervical

Extra u — Basal
I/trochanteric — low trochanter
Petrochanteric — through trochanters

Complications X

① Non-union
Delayed u

② Mal-union → deformity
shorten

③ Infect² — OM
→ sinus
Sequestrum → FB react²

④ Avascular necrosis

⑤ Damage — BV — gangrene
Nr — paralysis

Volkman's

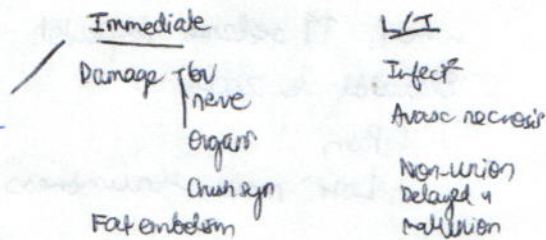
organs — X ribs
pelvis

f, tendon + muscle
↓
OA

⑥ Crush syndrome → ATN
— rhabdomyolysis

⑦ Fat embolism
X femur/tibia

⑧ Myositis ossificans (commonest site: Elbow)



Fract X

① Reductⁿ } closed
open

if much soft tissue btw & ends
injuz. br + Nr

② Immobilizatⁿ

Plaster - Paris

when M oedema expected

Elevated ~ 24H

? Pain

Loss move & numbness

Hexcelite

③ Tract } Skeletal
Gallie's
Skin

④ Int fixatⁿ

(i) Inlay — Nails — Kuntscher (intramedullary) X shaft femur humerus

— Muller's

X u tibia

(° if comminuted)

— Pins — Smith-Petersen X NOT

— Screws — small pieces bone
° compressⁿ device

(ii) Onlay — Plate (stainless steel ~ titanium) & screws

(iii) Cast wires — Kirschner
± stirrup — str tract

STE: if few^r blood supply